



PaR
SYSTEMS

PAR SYSTEMS – UK

REMOTE HANDLING, CRANES AND DECOMMISSIONING SOLUTIONS

*Your trusted partner.
Delivering fully integrated turnkey solutions to problems across the
Nuclear Industry.*

Remote Handling and Nuclear Engineers

- PAR M3000 Manipulator test rig, supporting 14 Units at Sellafield
- Remote operations and Decommissioning
- Training, trials and service
- Nuclear Crane design, build, service and upgrade
- Spares and Obsolescence engineering
- Design and build of nuclear site equipment
- We get the job done on nuclear sites!
- Agile UK Company- now an agent for PAR US instead of being a subsidiary



UK SME



Integrated Contractor

- SQEP Nuclear Workers
- Fully qualified to work on and off Nuclear sites
 - Security cleared (SC or DV)
 - Classified/Monitored workers
 - PVC/respirator trained
- Servicing a range of manipulators, cranes robots and remote handling equipment
- Mechanical and CE&I Design
- Mechanical and CE&I Installation and maintenance technicians
- Full project management and controls function



Full suite of professional standards

- We have worked hard to gain the right professional accreditations to enable us to perform correctly and demonstrate the right behaviors



Specialist Service Partnerships

Beyond PAR Manipulators



- MSM Service-



- Robotics



- Cameras

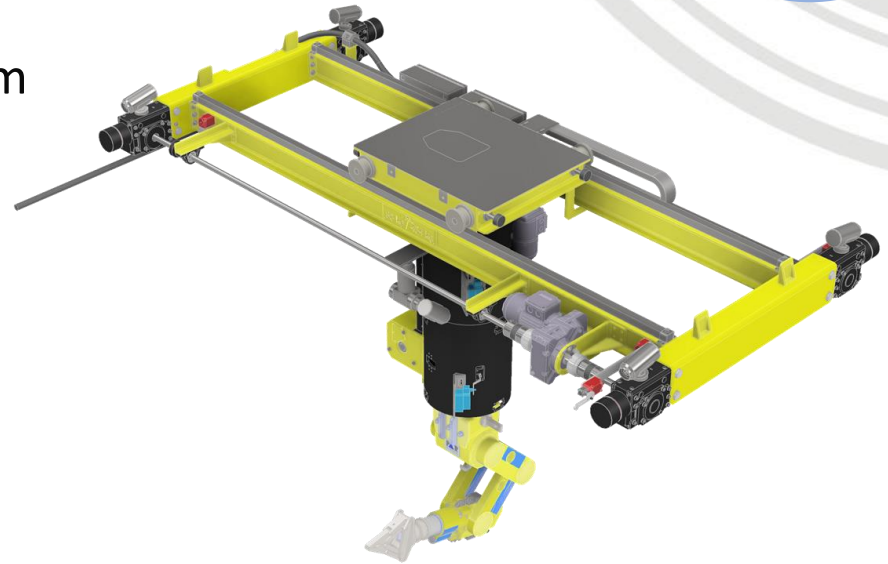
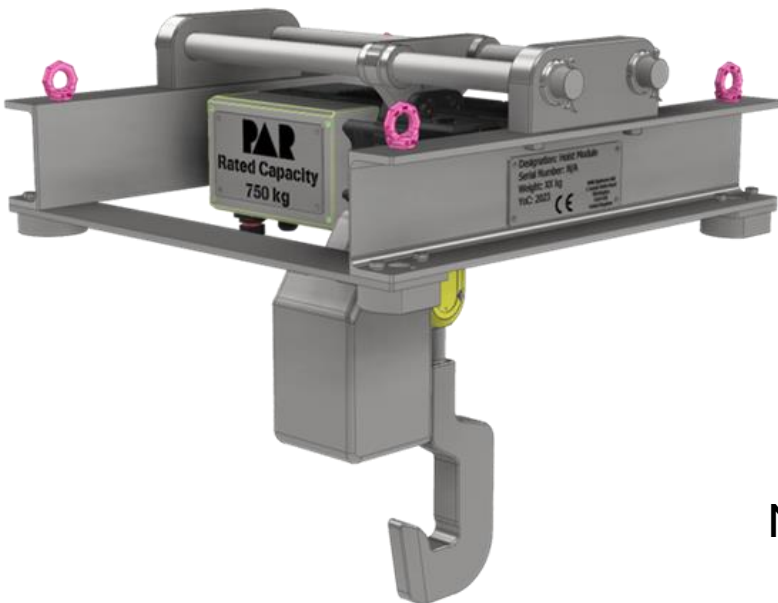


- Cranes



Design Examples

FGMSP Decanners Primary Handling System



Magnox East River- AGR Dismantler fuel handling

Design Examples

Remote Handled Nuclear Centrifuge B229

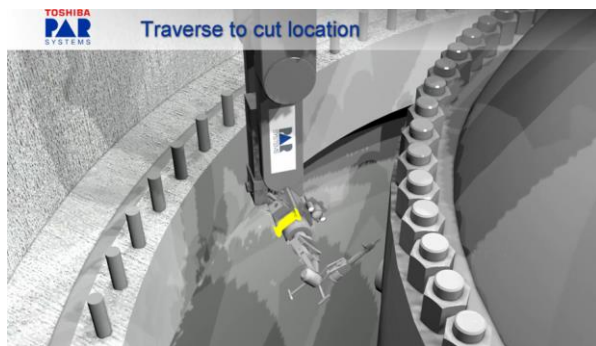
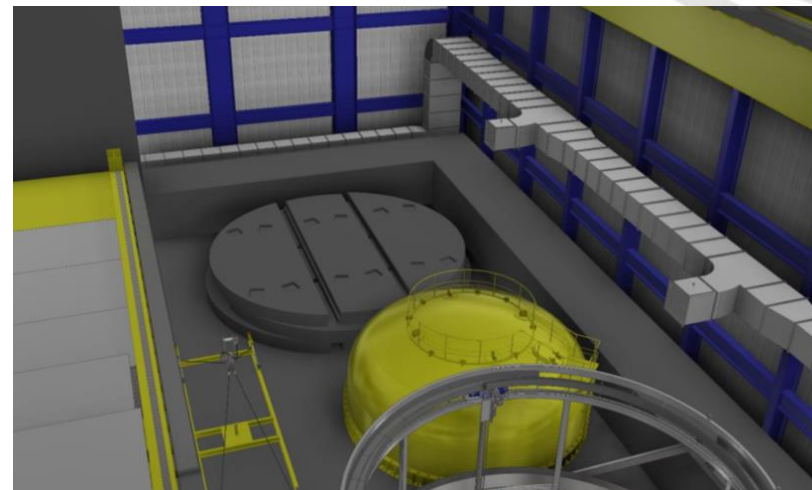
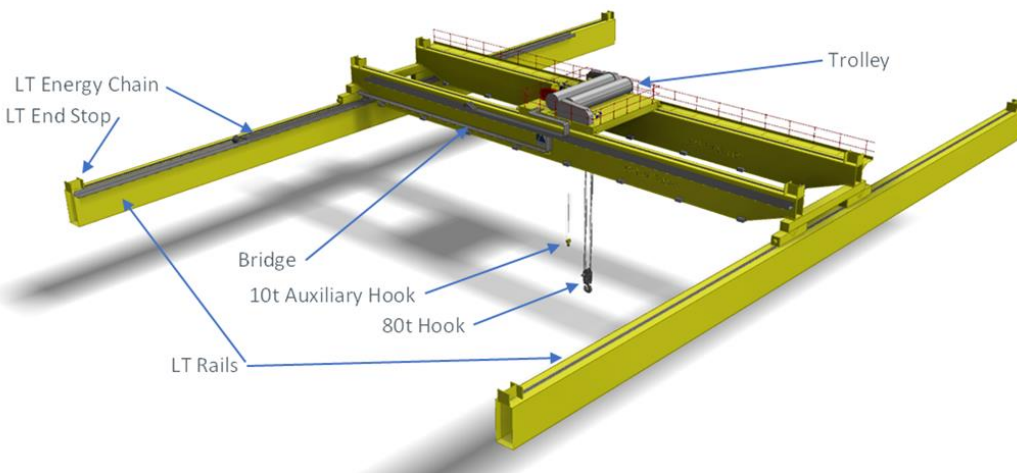


MER Skip Handler reinstatement



Fukushima Support from UK

Full 'Top Down' reactor decommissioning study for Unit 3 2020

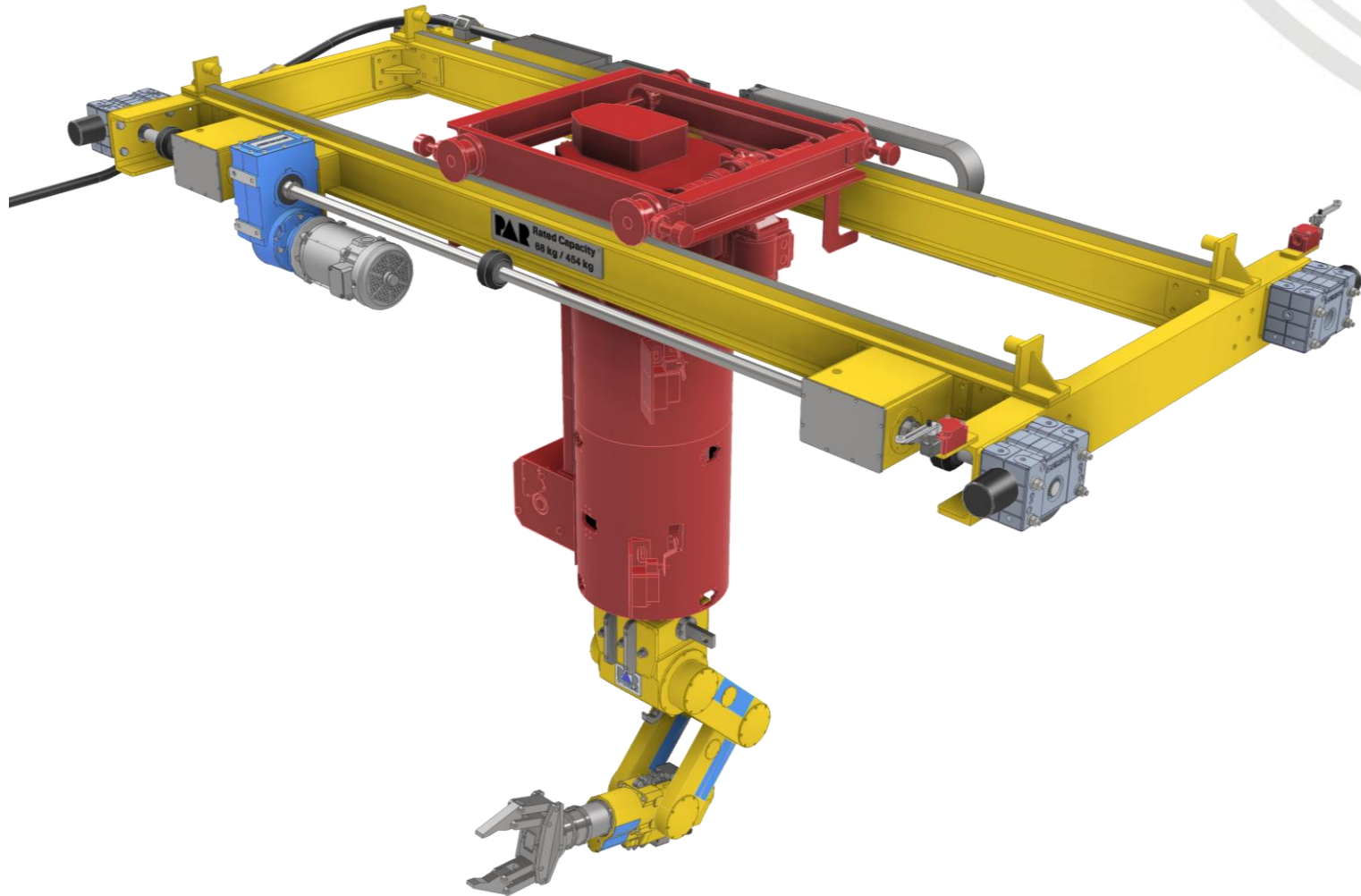


Robotic Decommissioning using Haptics and Collision avoidance with Createc Robotics 2022





IFE M3000 Manipulator



Inactive Hot Cell Facility



Inactive Hot Cell Facility



UK Facility Summary



- Lillyhall 600m² Rig Hall
- Office & conference space for 60+ people
- Inactive hot cell
- Robotics and Manipulators

- Haile- 600m² Rig Hall
- Office and conference space for 20 people
- Specialist nuclear Crane service and training



Crane centre- Haile



- 600m² (12m x 50m) Rig Hall with 5t building crane
- Office and conference space for 20 people
- Fully refurbished building, new heating, lighting and electrical system
- Opened January 2023
- 1 Mile form Sellafield site
- Neighbours- Mammoet, Jacobs and GA&M Lawson

Remote Handling Centre- Lillyhall



- Rig Hall 600m² 25m x 24m and 10t crane
- Office & conference space for 60+ people
- Control room with CCTV and broadcast capability
- Kuka and Staubli robotic training and trialing rigs
- MSSS project test area
- Hot cell and MOD crane build area





PAR UK Summary

‘UK SME with a fully rounded offering of remote handling support’

- Team of 37 Highly skilled people in Cumbria
- Integrated delivery of projects from design, through manufacture, installation and lifetime support
- Customer focus with honesty and integrity key values
- Extensive supply chain of trusted companies
- Based our UK Centre of Excellence in West Cumbria- the Home of the UK Nuclear Industry

